

MATERIAL

Welding black-oxide steel.

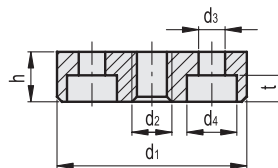
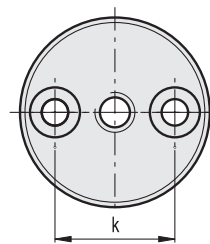
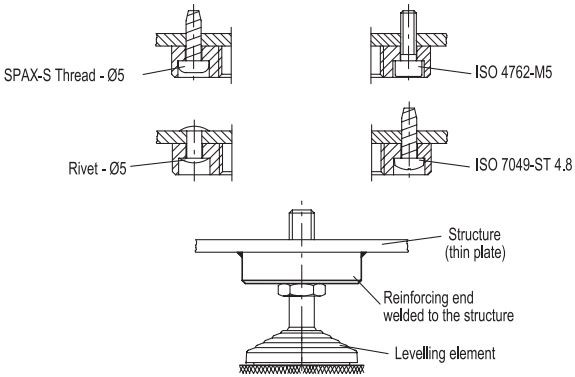
FEATURES AND APPLICATIONS

They are suitable for reinforcing the machinery structure on which the levelling element has to be applied in case this structure is very thin and consequently not rigid enough.

They can be applied also by means of welding.



Assembling examples



Conversion Table	
1 mm = 0.039 inch	
d1	
mm	inch
36	1.42

Code	Description	d1	d2	d3	d4	h	t	k	⚖
GN.14951	GN 349-36-M8	36	M8	5.3	10	10	5.3	24	67
GN.14952	GN 349-36-M10	36	M10	5.3	10	10	5.3	24	65
GN.14953	GN 349-36-M12	36	M12	5.3	10	10	5.3	24	63

- 1
- 2
- 3
- 4
- 5
- 6
- 7
- 8
- 9
- 10
- 11
- 12
- 13
- 14
- 15
- 16
- 17
- 18